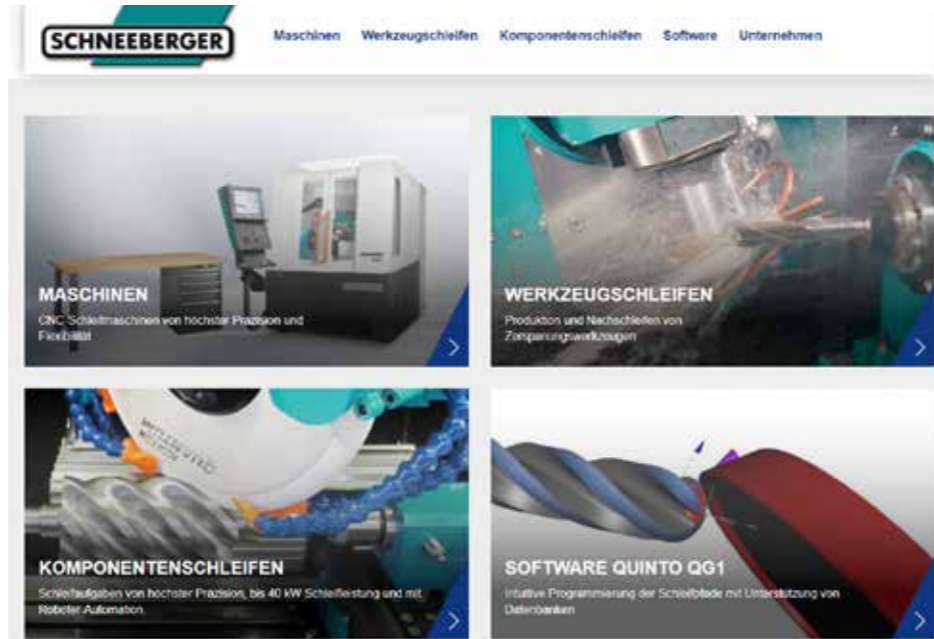


**New SCHNEEBERGER WEBSITE ONLINE**

**More info, more content.** The modernisation of our online presence has been completed. We have been online starting September 19. The site now offers more detailed information, numerous images and videos about SCHNEEBERGER machines and applications.

During development, strong attention was paid to **compatibility with new media** such as tablets and smartphones. News will be published on our blog in real time.

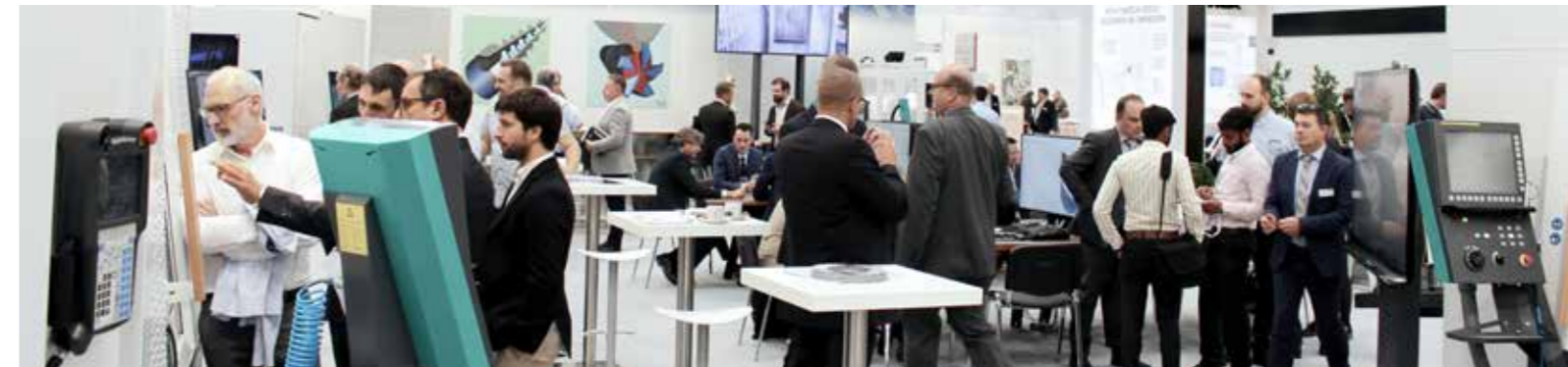
Visit us at:  
[www.schneeberger.swiss](http://www.schneeberger.swiss)



**news LETTER**



**December 2019**



**TORTOUR: once around Switzerland by bike!**

TORTOUR is an ultra non-stop cycle race along the Swiss borders, over Alpine passes back to the starting point in Schaffhausen am Rheinfall. **1,037 km, 14,960 metres of altitude** to be mastered within the time allowed. The individual riders or teams do this in 32 to 48 hours, non-stop, day and night.



René Zihler from the SCHNEEBERGER QS department is one of the athletes who accepted the challenge in the team of four. With an impressive average speed of **28.37 km/h** and a time of **36 hours, 58 minutes** they achieved an excellent **9th place final position**.



**SCHNEEBERGER as co-sponsor of the team extends its sincere congratulations!**



**Trade fair calendar**

ThaiMetalex	20.11.–23.11.2019	Bangkok
GrindTec	18.03.–21.03.2020	Augsburg
IndustrieParis	31.03.–03.04.2020	Paris
MACH	20.04.–24.04.2020	Birmingham
FEIMEC	05.05.–09.05.2020	São Paulo
Intertool	12.05.–15.05.2020	Vienna
BIEMH	25.05.–29.05.2020	Bilbao
IWF	25.08.–28.08.2020	Atlanta
IMTS	14.09.–19.09.2020	Chicago
AMB	15.09.–19.09.2020	Stuttgart
BIMU	14.10.–17.10.2020	Milan

**Editors:**  
Alexander Schneeberger,  
Hans-Peter Maurer

**Contributions:**  
Matthias Marti, Gamze Aksu, Marcus Studel

**Thank you for visiting us!**

**One week of excitement in the service of our customers. On site in Hannover.**

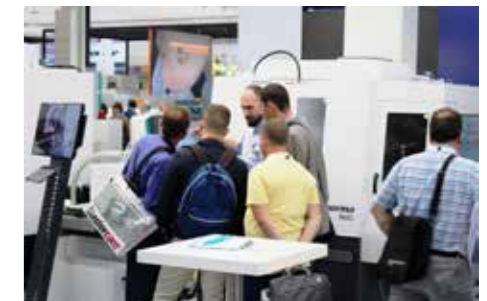


SCHNEEBERGER presented no less than **6 grinding machines** and the latest developments of the **CAD CAM software Qg1** at the EMO on a booth area of 234m<sup>2</sup>.

Special attention was paid to robotics: From the small nimble SCARA robot to the Fanuc Big Robot for parts up to 20 kg there was a lot to see and experience.

The grinding demonstrations offered a variety of SCHNEEBERGER application know-how. Bucking the general decline in visitor numbers, we were able to establish and deepen numerous pleasant contacts with a record number of EMO visitors.

**Thank you for your interest!**



# geminiNGM

geminiNGM has long made a name for itself in the industry with its **dynamic and precision**. The range of applications is wide: From sophisticated gear cutting tools to high-precision components.

Handling is never the limiting factor. The Fanuc Big Robot loads **20 kg parts** effortlessly and stows them in the arena on **3m<sup>2</sup> storage space**.



EMO application: Hirth gears



The **geminiNGM** is modularly expandable. The basic machine can be equipped with various robot systems, workpiece pallets and grinding wheel changers of several capacities.

# World first ariesNGP Production Scara

The Fanuc Scara Horizontal Robot is known from the fastest Pick & Place applications. As a first, it now brings the **ariesNGP** to a new level of automation. The small 5-axis grinding machine has risen to the **league of production machines**.



EMO application: Production of milling pins



Presented for the first time at the EMO, the nimble machine met with great interest from the expert audience. Compact design (**99cm** midsection) and yet surprisingly large machining area for tools of **250 mm length and diameter**. The robot of the latest generation can handle even the smallest parts. The **ariesNGP** is equipped with double spindle and on request with integrated coolant tank.

## Qg1 – the CAD CAM grinding software!

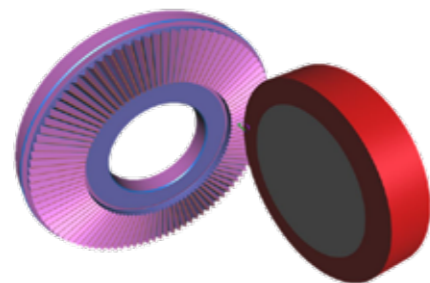
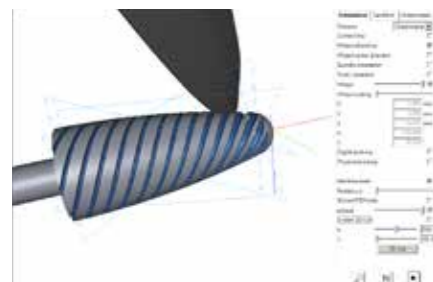
The high performance of the SCHNEEBERGER **Qg1** grinding software was demonstrated on the large touch screen and on several work tables at the exhibition stand.

The focus of the live demos was the new **STEP interface**. 3D workpiece data can be converted directly from CAD into perfect grinding approach. Getting to the finished workpiece couldn't be any faster.

Our visitors, who accepted the invitation to bring along a 3D file of their tools, were able to experience this live on site. It takes just a few clicks from importing the data to the finished grinding program.

**Qg1** focuses on user-friendliness and combines decades of experience in tool grinding. This is reflected in the extensive database and search function **Toogle**. In addition to the process parameters required for grinding for hundreds of tool types, this also includes grinding wheel and probe data.

Besides the **STEP Interface**, the software also offers further interfaces to formats such as **GDX, DXF** and **ISO**.



## Concept Control Panel!

Concept Cars were presented at the IAA in Frankfurt at the same time as EMO. At EMO, SCHNEEBERGER presented the **study of a new ergonomic control panel** for new machine generations.



In contrast to many automotive concepts, ours will certainly be achieved and implemented.

Modern design meets outstanding performance.

The slim control panel features a new high resolution 19" touch screen and lots of computing power with a **3.7 GHz CPU**, and a rapid **128 GB SSD hard disc**. The Windows 10 operating system is, for the first time, available from Fanuc.



Together with the trade journal **fertigung**, we are looking for the «2020 tool grinder of the year».

The preliminary decision involves solving a theoretical problem. An expert jury examines and decides which five candidates will com-

pete against each other in an exciting live competition at the GrindTec final in Augsburg. The aim is to program a workpiece and manufacture it on a SCHNEEBERGER ariesNGP. The winner will be named «2020 tool grinder of the year». There are great prizes waiting, such as a trip and much more.

The documents on the theoretical part of the work are now available for download on our website.

Download here:



[www.schneeberger.swiss/de/blog/werkzeugschleifer-des-jahres](http://www.schneeberger.swiss/de/blog/werkzeugschleifer-des-jahres)

## corvus NGB



The SCHNEEBERGER **corvus** travelling column machine leads the way in numerous grinding applications. The new **NGB B-type** is the thread and profile grinding machine of the **corvus** family. With its **40 kW Power Spindle** swivelling around the B axis, it grinds compressor screws, worm shafts and globoidal cams to a high finish.