

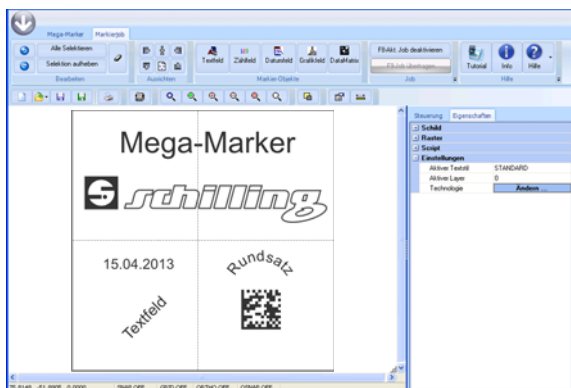
A class better!

Microdot Marking

- * *The independently programmable marking system with the innovative control system.*
- * *Permanent, direct part marking in seconds.*
- * *Easy operation.*
- * *All-In-One device: Sturdy, reliable, compact, professional.*
- * *Easy integration into production lines.*



*Optional:
Automatic Rotary Fixture
For marking round pieces*



PC-Software "Schillmarker 2"

- * *New graphic user interface*
- * *Logos & Graphics*
- * *Dates & serial numberings with pre- and suffix function*
- * *Wide range of fonts*
- * *Linear, circular and angular tags*
- * *D2-matrix codes*
- * *Multilingual programme*
- * *Optional: Import of databases*



Perfect Results

- * *The finest microdot marking on the market.*

Marking Area x / y	100 x 100 mm
Height adjustment	298 mm
Marking speed	1 mm/s to 50 mm/s, 1 char/s 3 mm height
Traverse speed	max. 80 mm/s
Marking resolution	0,05 mm, both X/Y axes
Character height	from 0.1 mm freely editable
Stylus frequency	0 - 150 Hz
Impact force	adjustable
Height compens. of needle	approx. 10 mm
Air requirements	200 l/min
Working pressure	max. 6 bar
Dimensions (LxWxH;mm)	
Marking head	251x255x189
Column and base	370x400x760
approx. Weight in kg	
Marking head	9.4
Column and base	18.6
Supply	90-265VAC 50/60 Hz
Memory	1 MB Flash / 1 MB RAM
Font	DIN 1451m, further ones on request
Formats	Linear, angular and circular text, date, counter with pre- and suffix function, logos on request
Brand	Mega-Marker is a registered trademark



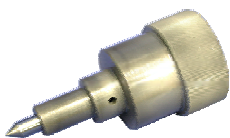
Portable Version
(Optional)
With handles and ground plate, incl. prism
Art. No.: 61.1100.0



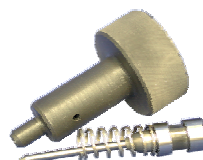
Needle Set

- Light replacement needles with 60° / 90° / 118°
 - Normal piston and short piston, with springs
 - O-Ring, washers and allen-key
- Art. No.: 66.64SET.3

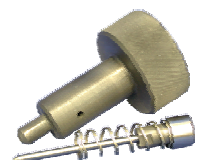
Complete Needle Assemblies



Heavy
Needle assembly ø6mm
For deep markings
Standard angle of the tip: 60°
Other angles: 90° / 118°
Art. No.: 66.62150.6S



Light
Needle assembly ø3mm
For normal markings
Standard angle of the tip: 60°
Other angles: 90° / 118°
Art. No.: 66.62032.3S



Light, soft
Needle assembly ø3mm
For fine markings
Standard angle of the tip: 60°
Other angles: 90° / 118°
Art. No.: 66.62132.3S