

The image is a brochure cover for the Schneeberger Aries Woodworking Industry. It features a blurred, high-speed photograph of a large industrial machine, likely a CNC router or mill, with a prominent circular cutting head. The background is a mix of grey and white tones, suggesting a factory environment. On the left side, there is a solid orange vertical bar. The Schneeberger logo is in the top right, and the product name 'ARIES' is in large white letters in the center. Below it, 'Woodworking Industry' is written in a smaller white font. In the bottom right corner, the slogan 'TECHNOLOGY FOR TOOLING' is displayed in green and white. The overall design is modern and industrial.

**SCHNEEBERGER**

# ARIES

Woodworking Industry

TECHNOLOGY  
FOR TOOLING



# ▶ The mechanical system

## **AXES**

Flexibility with 2 or 4 controlled CNC axes. One or three linear and one rotational axis with servo motors, resolution 0.5 micron or 0.001°.

C axis manual: Position indicator with a resolution of 0.001°. The grinding head can be rotated through  $\pm 180^\circ$  in the C axis.

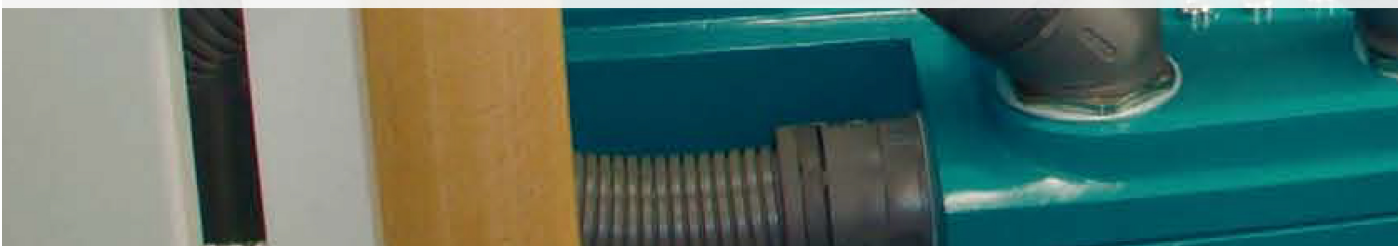
## **GRINDING HEAD**

Dual grinding spindle for grinding wheels with dia. between 50 mm and 200 mm, with two-sided HSK50 holders for up to 4 grinding wheels.

2.2 kW grinding motor, spindle speed 2000-9000 rpm. Infinitely variable and programmable via frequency converter.

Option: Water-cooled grinding motor, 7.5 kW (100%), 10 kW (60%).

Grinding motor output monitoring with current consumption display on the operator panel. Programmable and infinitely adjustable speed between 1000 and 9000 rpm with frequency converter.





tem

### **3D PROBE**

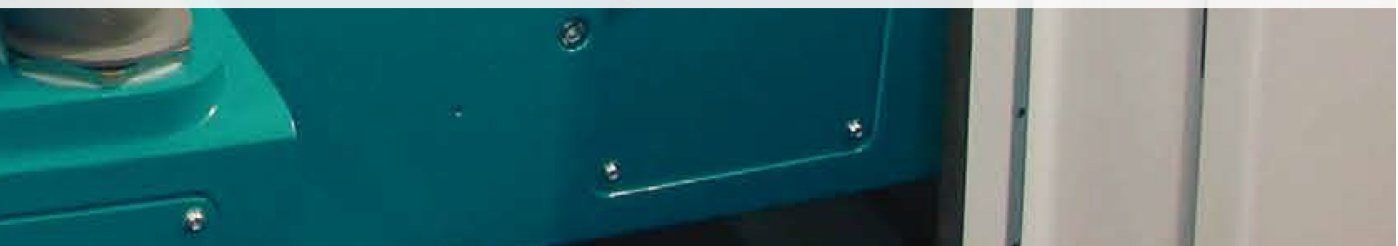
Electronic probe for optimum positioning, measurement and tool monitoring. Integrated measuring software for each tool type. Free determination of the measuring cycle.

### **WORK HOLDING**

Application-specific tool holders, chucks, ISO50, HSK-Powerlock or Hydro complement the tool clamping systems, manual or automatic as required.

### **TAILSTOCK, STEADY REST**

Manual or automatic tail stocks, steady rests or prisma for planer heads.

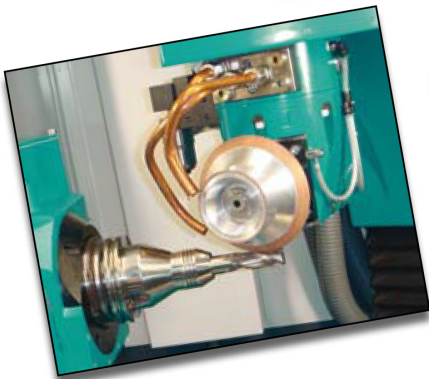




▶ **Automated Precision**

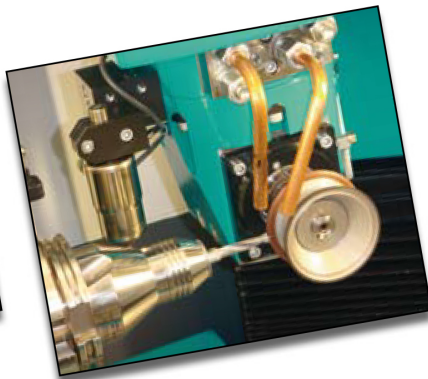


# ▶ Special features



## **SPIRAL TOOLS**

Production and regrinding of spiral tools: flute, O/D, face, end, gashing, chamfer and small corner radii. Menu-driven input of geometry and process data. Pitch determination via 3-D sensor, grinding of all right and left cutting tools with positive or negative pitch. Nominal pitch or measured with probe.



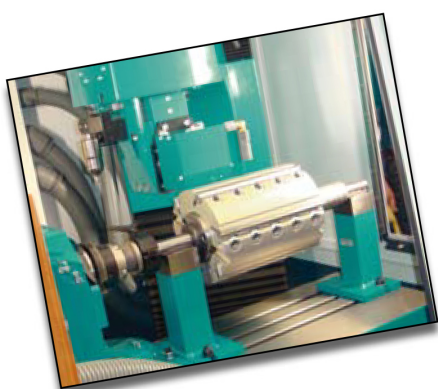
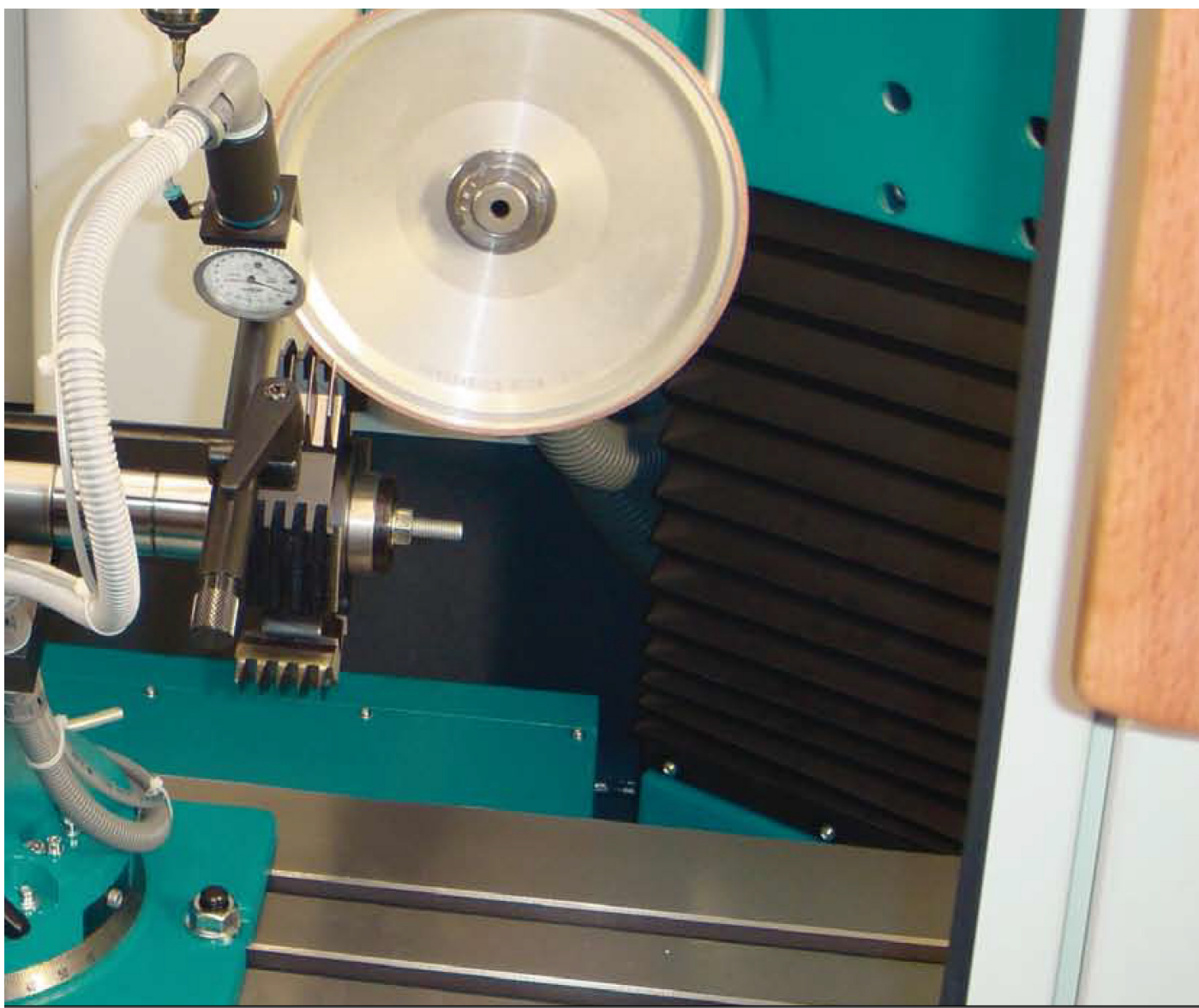
## **DOWEL DRILL**

Production and regrinding of dowel drills. Face, unclamping, tip and perimeter cylindrical grinding, polished in a single clamping on the 4-axis ARIES machine. The end-geometry is ground with profiled wheels, a method for high-performance production.



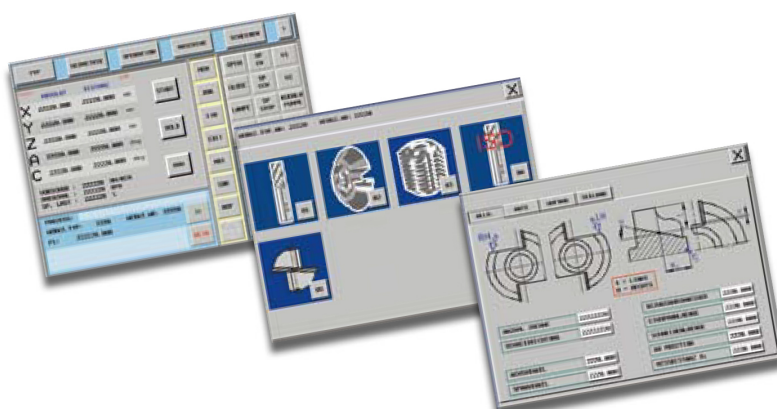
## **PROFILE CUTTER**

Regrinding of all milling tools including fingerjoint cutters and side milling cutters, straight or shear angle at cutting face, dia. up to 350 mm. Grinding of all right and left cutting tools, to nominal division or based on existing values, determined by face probing or O/D-concentricity probe. Infeed selectable in A or Y.



**PLANER HEADS**

Production and regrinding of planer heads up to 350 mm dia. and 330 mm length, clearance grinding with carbide grinding sliding shoe at the grinding head.



**SOFTWARE**

SCHNEEBERGER's long-standing experience with tools for the timber industry and extensive engineering know-how led to the latest software for 2 and 4-axis grinding.

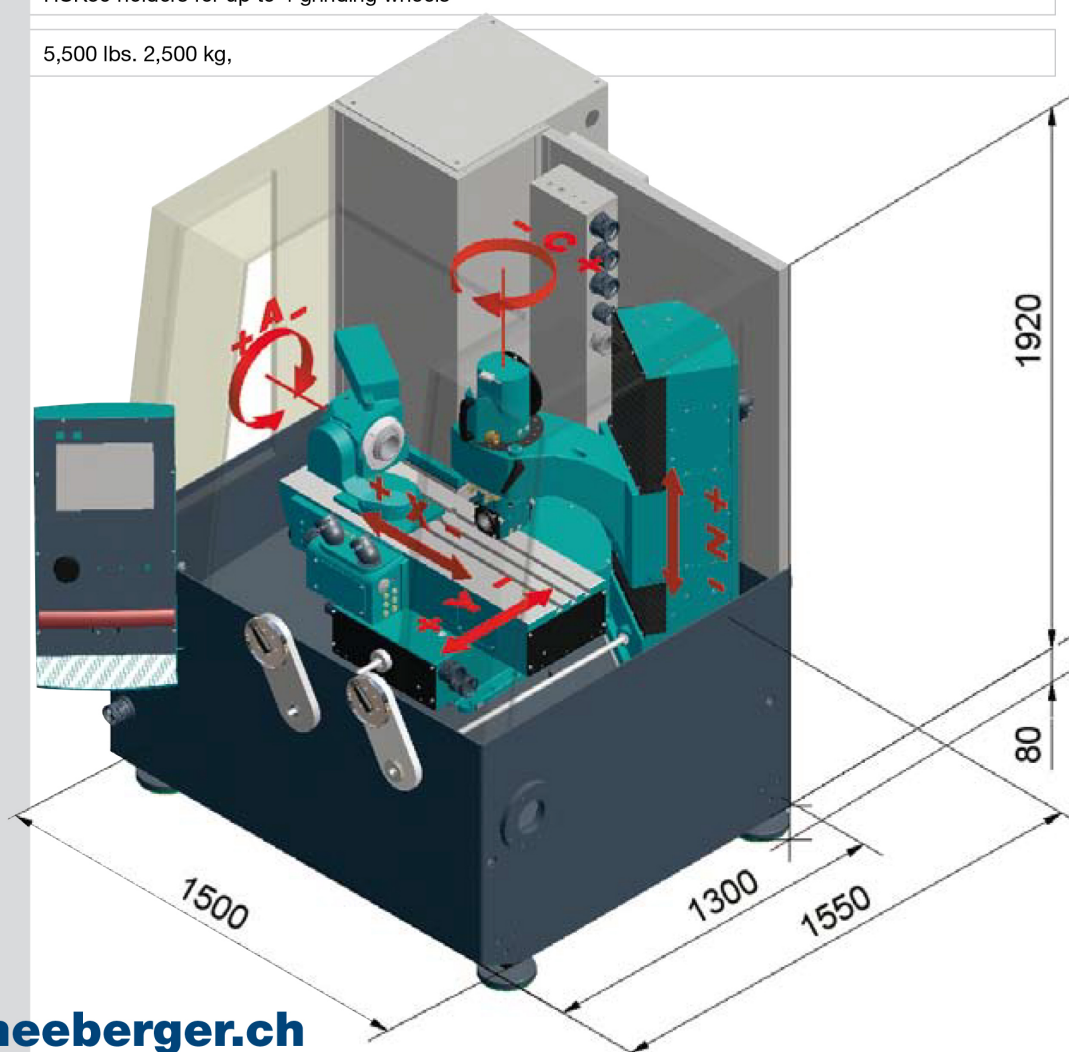
Background calculations and straightforward menu control make operation simple and highly productive.

## Technical data

**ARIES**

▶ <b>Axes:</b>	<b>X-Axis</b>	<b>ARIES 2</b>	<b>ARIES 4</b>	400 mm, longitudinal slide
	<b>Y-Axis</b>	manual	CNC	260 mm, cross slide, resolution 0.001 mm
	<b>Z-Axis</b>	manual	CNC	300 mm, vertical column, resolution 0.001 mm
	<b>A-Axis</b>	CNC	CNC	Dividing head, CNC axis, free rotary motion, <b>ISO50</b> , center-height 210 mm
	<b>C-Axis</b>	manual	manual	Manual axis with position indicator integrated in controls and software, resolution 0.001°, grinding head swivels ± 180°
▶ <b>Control:</b>	FANUC Powermate, 2 or 4 CNC-controlled axes, simultaneously interpolatable 10.4" LCD colour touchscreen, RS232			
▶ <b>Grinding head:</b>	Dual grinding spindle for grinding wheels with dia. between 50 mm and 200 mm, 2.2 kW grinding motor, spindle speed 2000-9000 rpm, optional water-cooled grinding motor, 7.5 kW (100%), 10 kW (60%), speed 1000-9000 rpm. HSK50 holders for up to 4 grinding wheels			
▶ <b>Weight:</b>	5,500 lbs. 2,500 kg,			

▲ SUBJECT TO TECHNICAL MODIFICATIONS



[www.schneeberger.ch](http://www.schneeberger.ch)

▶ <b>Subsidiaries:</b>	<b>France</b>	J. Schneeberger Machines SARL, +33 299 35 10 35, <a href="mailto:schneeberger.fr@wanadoo.fr">schneeberger.fr@wanadoo.fr</a>
	<b>Deutschland</b>	J. Schneeberger Maschinen GmbH, +49 7044 901820, <a href="mailto:deutschland@schneeberger.ch">deutschland@schneeberger.ch</a>
	<b>Italia</b>	J. Schneeberger Service Italia srl, +39 045 6270565, <a href="mailto:info@schneeberger-italia.com">info@schneeberger-italia.com</a>
	<b>USA</b>	J. Schneeberger Corp, +1 847 888 3498, <a href="mailto:info@schneeberger-us.com">info@schneeberger-us.com</a>
	<b>UK</b>	J. Schneeberger Ltd, +44 1530 274177, <a href="mailto:info@schneeberger.org.uk">info@schneeberger.org.uk</a>
	<b>China</b>	J. Schneeberger (Nanjing) Co. Ltd., +86 13 951 644 676, <a href="mailto:china@schneeberger.cn">china@schneeberger.cn</a>

▶ <b>Agencies:</b>	Austria, Brazil, Canada, Korea, Finland, Indonesia, Israel, Malaysia, Mexico, Norway, Poland, Portugal, Czech Republic, Romania, Russia, Singapore, Slovakia, Slovenia, Spain, Sweden, Thailand, Taiwan, Turkey, Hungary.
--------------------	---

▶ <b>Head office:</b>	<b>J. SCHNEEBERGER Maschinen AG</b> <b>CH-4914 Roggwil, Switzerland</b> Tel. +41 62 918 4400 Fax +41 62 918 4411 <a href="mailto:Info@schneeberger.ch">Info@schneeberger.ch</a>
-----------------------	--

Tel: 01332 865232  
Mob: 07909 445348  
Email: [sales@ssptech.co.uk](mailto:sales@ssptech.co.uk)  
Web: [www.ssptech.co.uk](http://www.ssptech.co.uk)

